

CAPABILITY STATEMENT

2026

 METROCON





ABOUT METROCON

Metrocon is a premier building contractor with a reputation for delivering a seamless end-to-end building service for clients across WA.

For over two decades, Metrocon has been a trusted leader in Perth's construction industry, specialising in best-in-class new builds and major refurbishments within live operating environments.

With a track record of over 100 completed projects for clients across Western Australia and over \$300 million in revenue, a significant portion of our portfolio comes from repeat clients and referrals across various sectors.

From smaller works like office fit-outs to complex large-scale projects such as schools and mixed use developments, our team is known to consistently deliver optimal building outcomes in all sectors up to \$50 million.

Our expert team brings extensive experience across the entire project lifecycle, allowing for flexible engagement through a variety of delivery models, including early contractor involvement, construct only, design and construct, and construction management.

Whether engaged from the earliest planning stages or much later in the process, we provide a clear and transparent construction plan with a fixed price and defined delivery timeframe. From the moment work begins, we hold ourselves accountable to these commitments, keeping you informed and engaged every step of the way.

OUR CAPABILITIES

CONSTRUCT ONLY

With design completed prior to engagement, our team quickly moves to understand and embrace your vision for the project, establishing clear cost and delivery timeframes before construction commences.

DESIGN & CONSTRUCT

Decisions made during concept and design stages can have the most substantial impact on a project's success. With full responsibility for project delivery, we can integrate design buildability, scheduling, and procurement considerations into our construction solution.

CONSTRUCTION MANAGEMENT

We provide comprehensive oversight and strategic direction from project inception to completion. Working collaboratively with clients and their design teams, we oversee trades, optimise construction methodologies, and ensure adherence to stringent quality and safety standards.

EARLY CONTRACTOR INVOLVEMENT

We are involved from the earliest stage, allowing for greater certainty and control over project cost, risk, and timelines. We can better anticipate constraints such as procurement lead times to ensure a smoother and earlier transition from design to construction than with other delivery methods.

REFURBISHMENT & FITOUT

Whether we're building new commercial fitouts or revitalising existing properties, we understand what it takes to deliver modern, functional interior spaces while operating within challenging live environments.



OUR SECTORS



EDUCATION



MULTI-RESIDENTIAL



COMMUNITY



RETAIL & HOSPITALITY



COMMERCIAL & INDUSTRIAL



RETIREMENT & AGED CARE



FEATURED PROJECTS

AUSTRALIAN ISLAMIC COLLEGE, FORRESTDALE

STAGE 1 - NEW KINDERGARTEN, PRE-PRIMARY, PRIMARY, MAINTENANCE
SHED, & ASSOCIATED INFRASTRUCTURE

SECTOR Education	VALUE \$19M	CLIENT Australian Islamic College
TYPE Construct only	COMPLETED 2024	ARCHITECT Marocchi Engineering Group



AUSTRALIAN ISLAMIC COLLEGE, FORRESTDALE

STAGE 2 - NEW TWO-STOREY HIGH SCHOOL WITH ADMIN, SPECIALTY BUILDINGS, AND SINGLE-STORY CANTEEN

SECTOR Education	VALUE \$31M	CLIENT Australian Islamic College
TYPE Construct only	COMPLETED Ongoing	ARCHITECT Marocchi Engineering Group



AUSTRALIAN ISLAMIC COLLEGE, FORRESTDALE & HENLEY BROOK

STAGE 3 - NEW GYMNASIUM AND LIBRARY

SECTOR

Education

VALUE

\$23M

CLIENT

Australian Islamic College

TYPE

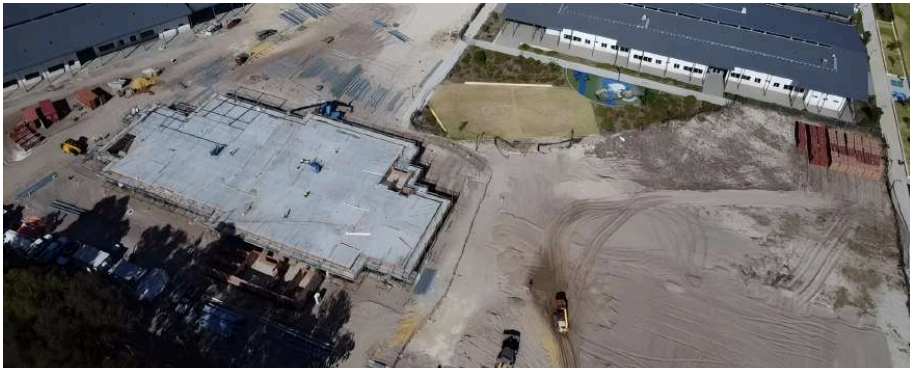
Construct only

COMPLETED

Ongoing

ARCHITECT

Marocchi Engineering Group



AUSTRALIAN ISLAMIC COLLEGE, FORRESTDALE & HENLEY BROOK

STAGE 4 - TWO NEW PLACES OF WORSHIP

SECTOR

Education & Community

VALUE

\$28.2M

CLIENT

Australian Islamic College

TYPE

Construct only

COMPLETED

Ongoing

ARCHITECT

Archetype Design Studio



MELL GARDENS

STAGE 2 - 41 AGED PERSONS VILLAS

SECTOR

Retirement & Aged Care

VALUE

\$18.6M

CLIENT

Aegis Aged Care Group

TYPE

Construct only

COMPLETED

Ongoing

ARCHITECT

Montague Grant Architects



NOUVEAU NEDLANDS

MIXED-USE MID-RISE, SEVEN STOREYS, 17 APARTMENTS WITH COMMERCIAL & SHARED SPACES ON GROUND FLOOR

SECTOR
Multi-residential

VALUE
\$15.5M

CLIENT
Griffin Group

TYPE
Construction management

COMPLETED
Ongoing

ARCHITECT
maarch*



MONUMENT EAST

STAGE 1 - 23 MODERN TOWNHOUSES

SECTOR

Multi-residential

VALUE

\$11M

CLIENT

Locus Property

TYPE

Design and construct

COMPLETED

Ongoing

ARCHITECT

Metrocon



MONUMENT EAST

STAGE 3 - 14 TWO-STOREY TOWNHOUSES

SECTOR

Multi-residential

VALUE

\$8M

CLIENT

Locus Property

TYPE

Design and construct

COMPLETED

Ongoing

ARCHITECT

Metrocon



LA SALLE CATHOLIC COLLEGE

NEW 40-BED BOARDING FACILITY

SECTOR

Education

VALUE

\$10M

CLIENT

CEWA

TYPE

Construct only

COMPLETED

Ongoing

ARCHITECT

Munns Sly Moore



PARK LANE TOWNHOUSES

22 TWO-STOREY TOWNHOUSES

SECTOR

Multi-residential

VALUE

\$9.3M

CLIENT

Locus Property

TYPE

Design & construct

COMPLETED

Ongoing

ARCHITECT

Metrocon



ST JAMES ANGLICAN SCHOOL

STAGE 1 - NEW PRIMARY SCHOOL CONSISTING OF KINDERGARTEN, PRE-PRIMARY, PRIMARY, AND ASSOCIATED INFRASTRUCTURE

SECTOR Education	VALUE \$7.2M	CLIENT Anglican Schools Commission
TYPE Design & construct	COMPLETED 2016	ARCHITECT DWA Architects



SUKHA RESIDENCES

SIX LUXURY TWO-STOREY TOWNHOUSES

SECTOR

Multi-residential

VALUE

\$6M

CLIENT

Griffin Group

TYPE

Construction management

COMPLETED

Ongoing

ARCHITECT

Fine Lines Drafting



IRENE MCCORMACK CATHOLIC COLLEGE

NEW LIBRARY BUILDING & REFURBISHMENT OF EXISTING HOME-ECONOMICS CLASSROOMS, IT ROOMS, & SCIENCE LAB

SECTOR Education	VALUE \$5.9M	CLIENT CEWA
TYPE Construct only	COMPLETED 2008	ARCHITECT Parry & Rosenthal Architects



ST JOHN PAUL II PARISH

NEW CHAPEL AT ST JOHN PAUL II CATHOLIC PRIMARY SCHOOL

SECTOR

Community

VALUE

\$5.5M

CLIENT

Catholic Archdiocese of Perth

TYPE

Construct only

COMPLETED

2023

ARCHITECT

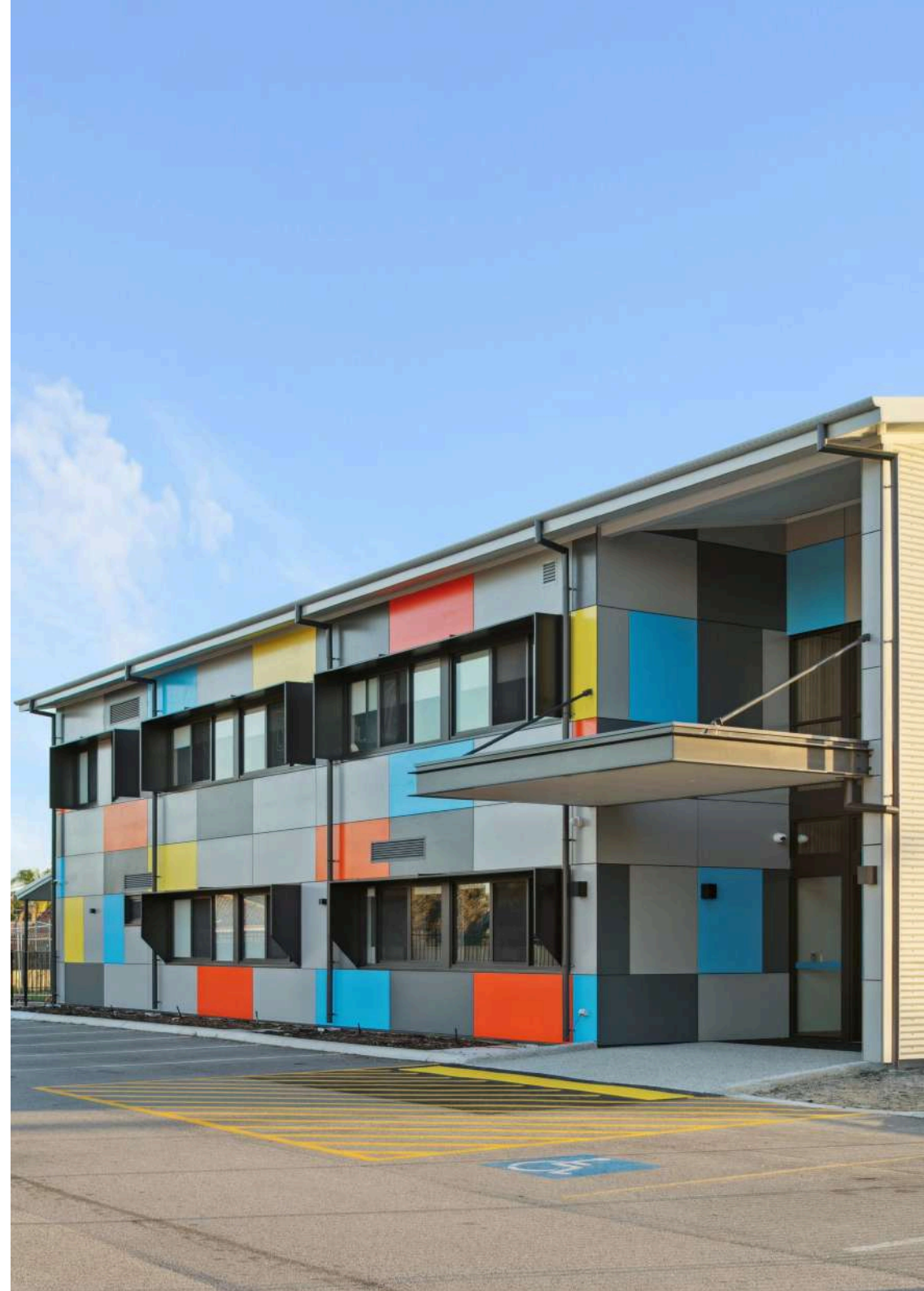
DWA Architects



FOUNTAIN COLLEGE

STAGE 3 - NEW PRIMARY SCHOOL CONSISTING OF 6 CLASSROOMS,
A LIBRARY, IT LAB, STAFFROOM, AND FOUR ADMIN OFFICES

SECTOR Education	VALUE \$5.4M	CLIENT Fountain College
TYPE Construct only	COMPLETED 2025	ARCHITECT DWA Architects



FOUNTAIN COLLEGE

STAGE 4 - NEW ADMIN BUILDING 10 OFFICES, 2 STAFF ROOMS, CONFERENCE, INTERVIEW, LUNCH ROOMS, RECEPTION, SICKBAY, & UNIFORM SHOP

SECTOR

Education

VALUE

\$4.1M

CLIENT

Fountain College

TYPE

Construct only

COMPLETED

Ongoing

ARCHITECT

DWA Architects



20 COOPER STREET APARTMENTS

10 LUXURY APARTMENTS

SECTOR

Multi-residential

VALUE

\$4.5M

CLIENT

Maars Developments

TYPE

Construction management

COMPLETED

2025

ARCHITECT

maarch*



ST PETER'S EARLY LEARNING CENTER

STAGE 9 - NEW EARLY LEARNING CENTRE & PLAYGROUND

SECTOR Education	VALUE \$4.2M	CLIENT CEWA
TYPE Construct only	COMPLETED 2024	ARCHITECT EIW Architects



CHAPEL OF ST JAMES

NEW CHAPEL AT ST JAMES' ANGLICAN SCHOOL

SECTOR

Community

VALUE

\$3M

CLIENT

Anglican Schools Commission

TYPE

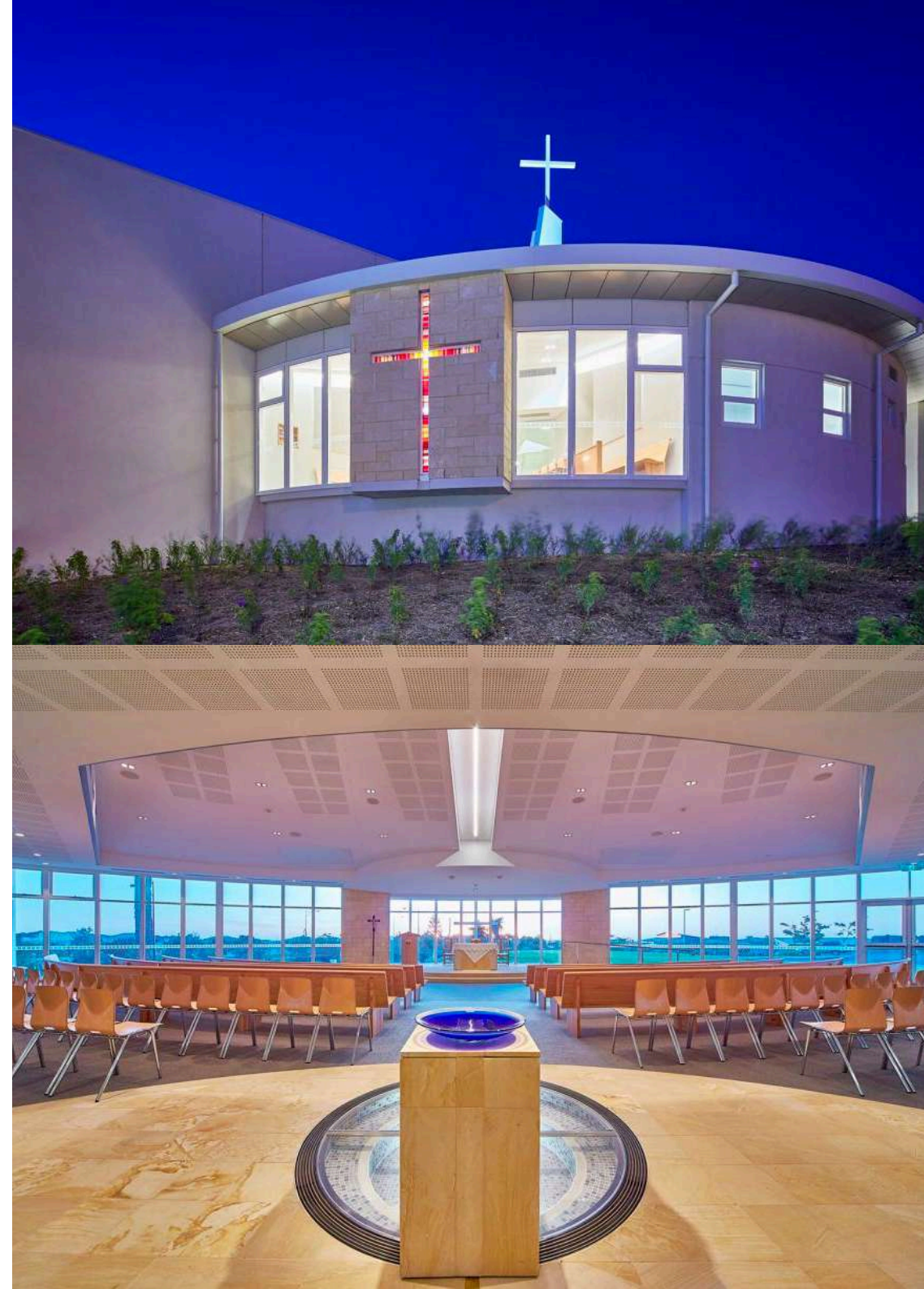
Construct only

COMPLETED

2015

ARCHITECT

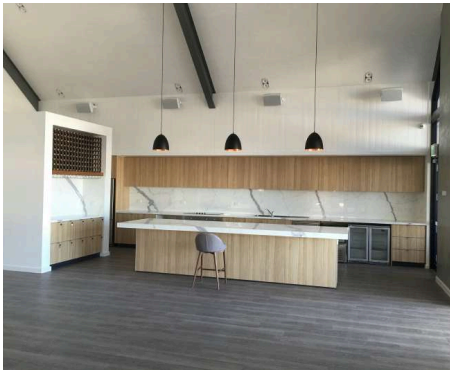
DWA Architects



BLUE HQ FREMANTLE

NEW CLUBROOMS, WORKSHOP, CORPORATE ENTERTAINMENT &
BOAT STACKING FACILITIES

SECTOR Community	VALUE \$3M	CLIENT Blue HQ
TYPE Construct only	COMPLETED 2016	ARCHITECT Coda



MANDURAH CATHOLIC COLLEGE

STAGE 22 – TWO NEW CLASSROOMS, STAFF OFFICES, RECEPTION, RECOVERY ROOMS, AND LIBRARY RE-ROOFING & REFURBISHMENT

SECTOR

Education

VALUE

\$2.4M

CLIENT

CEWA

TYPE

Construct only

COMPLETED

2025

ARCHITECT

Paterson Architects



CURRENT & COMPLETED PROJECTS

CURRENT

- Australian Islamic College Forrestdale (Stage 2) *\$31M*
- Australian Islamic College Forrestdale (Stage 3) *\$11.5M*
- Australian Islamic College Forrestdale Mosque (Stage 4) *\$14.1M*
- Australian Islamic College Henley Brook (Stage 3) *\$11.5M*
- Australian Islamic College Henley Brook Mosque (Stage 4) *\$14.1M*
- Mell Gardens Aged Care Villas *\$18.6M*
- Nouveau Nedlands Apartments *\$15.5M*
- Monument East Townhouses (Stage 1) *\$11M*
- Monument East Townhouses (Stage 3) *\$8M*
- La Salle Catholic College Boarding House *\$10M*
- Park Lane Townhouses *\$9.3M*
- Sukha Scarborough Townhouses *\$6M*
- Fountain College (Stage 4) *\$4.1M*

COMPLETED (\$1.5M+)

- Australian Islamic College Forrestdale (Stage 1) *\$19M*
- St James Anglican School *\$7.2M*
- Curtin University *\$7M*
- Irene McCormack Catholic College *\$5.9M*
- St John Paul II Parish *\$5.5M*
- ECU, Deans Office & WAAPA Extension *\$5.5M*
- Fountain College (Stage 3) *\$5.4M*
- Rowethorpe, ILU's (Stage 3) *\$5.3M*
- 20 Cooper Street Apartments *\$4.5M*
- Aranmore Catholic College *\$4.5M*
- St Peters Early Learning Centre *\$4.3M*
- Rowethorpe, Independent Living *\$4.1M*
- St Vincent's Catholic Primary School *\$3.8M*
- Scotch College, Upper Primary *\$3.2M*





CURRENT & COMPLETED PROJECTS

- Mel Maria Catholic Primary School \$3.1M
- Blue HQ Fremantle \$3M
- Swan Valley Anglican Community School \$2.8M
- Prendiville Catholic College \$2.7M
- Majella Catholic Primary School (Stage 11) \$2.5M
- Midland Youth Hub \$2.5M
- Mandurah Catholic College (Stage 22) \$2.4M
- Ellenbrook Sports Pavilion \$2.4M
- Ursula Frayne Catholic College (Stage 11) \$2.3M
- Rowethorpe, Apartment Conversions \$2.3M
- Aldi Store Waikiki \$2.2M
- Mamarapha Aboriginal Training College \$2M
- Whitford Catholic Primary School (Stage 7) \$2M
- Exmouth Power Station \$2M
- Aarons Hotel Perth \$2M
- St Kieran Catholic Primary School (Stage 8) \$1.9M
- Brighton Catholic Primary School \$1.7M
- Our Lady of Mount Carmel School \$1.7M
- Atwell Primary School \$1.7M
- St Dominic's Catholic Primary School (Stage 9) \$1.6M
- Canning Vale Primary School \$1.6M
- Xavier Catholic School (Stage 4) \$1.5M
- Centenary Pavilion \$1.5M
- ECU, Buildings 1, 3, 14, & 16 \$1.5M
- Southlands Food Court \$1.5M

TESTIMONIALS



Abdullah Khan

EXECUTIVE PRINCIPAL & CEO, AIC PERTH

We are excited to share our positive experience with Metrocon, the esteemed company responsible for the construction of our school, the Australian Islamic College Forrestdale. Metrocon constructed three buildings for our institution, including two Kindergarten classrooms, four Pre-Primary classrooms, and a double-story Primary building featuring 24 classrooms. The quality of construction is exceptional, reflecting the high standards and meticulous attention to detail.

The project was completed on time, demonstrating Metrocon's commitment to punctuality and efficiency. Throughout the entire process, their team maintained excellent communication, keeping us informed at every stage of the construction. Their cooperation and willingness to address any concerns we had were truly commendable. We are incredibly satisfied with the final outcome and highly recommend Metrocon to any organisation seeking a reliable and professional construction company.



Chloe Summers

DIRECTOR, EIW ARCHITECTS

We had the pleasure of working with Metrocon as the builders on the St. Peter's Early Learning Centre project. From the outset, Metrocon demonstrated a commendable commitment to delivering a high-quality project within budget, ensuring the school's needs were always front and centre. Their team was professional and accommodating, responding flexibly when handling various changes requested by the school along the way.

One of the standout aspects of working with Metrocon was their focus on direct communication and collaboration ... This emphasis on teamwork brought together the school, architect, builder, and consultants, allowing us all to navigate site and budgetary constraints with efficiency. Their approachable and easy-going manner created a positive and enjoyable atmosphere on site, making the entire process smooth and collaborative. We are very pleased with the results, and I would confidently recommend Metrocon for projects requiring a blend of adaptability, strong communication, and a thoughtful approach to client needs.



Murat Sevil

PRINCIPAL, FOUNTAIN COLLEGE

We were thoroughly impressed with the quality of workmanship delivered on our new primary building by Metrocon. They maintained clear and consistent communication throughout the project, ensuring mutual understanding and smooth collaboration at every stage. Their professionalism and attention to detail made working with them a pleasure.

TESTIMONIALS



Stephen Blake
PRINCIPAL, OUR LADY OF LOURDES CPS

Our school partnered with Metrocon to complete major capital development works in 2021. From our initial project meeting, it was clear that representatives from the company understood the complex nature of working within a school environment and assured myself, as Principal of the school, that their goal was to limit the impact to the school community as much as possible during the building process. I found Metrocon's site manager assigned to our project to be easy to communicate with and was always willing to hear any queries or concerns I had throughout the process. Our school was very pleased with the final outcome of our capital development project and would definitely recommend Metrocon for future building works in our school system or other organisations.

Dean Fehlberg

M C D F DIRECTOR, MCD F ARCHITECTS

Metrocon have been considered by MCD F Architects for school projects because of their reputation for quality construction and being able to cooperatively work with schools on tight integrated sites meeting timelines and budgets. We would recommend them as builders to clients for future appropriate projects and they are one of our preferred tenderers.

They were selected to competitively tender a classroom wing addition and highly detailed nature play facility situation in the heart of the St Brigid's School campus in Middle Swan. Upon winning the tender, they worked to immediately to establish a rapport with the school administration, staff, architect and sub-contractors, which was maintained throughout the project by their administration and construction team. The project was managed professionally and with a very high quality of workmanship. They met all time requirements and have been fair and reasonable when costing variations.



Darry Winsor
PRINCIPAL, NOTRE DAME CPS

In 2018 Metrocon Builders were contracted to complete renovations at Notre Dame Catholic Primary School. Their work was completed to a very high standard, they were easy to work with, ensuring minimal disruption to our school during the works period and they completed the works on budget within the agreed timeframe. Regular site meetings ensured that we were fully aware of the progress of our project and able to negotiate the minor adjustments that arose as the project progressed. Overall, a very positive experience with a great result which has enhanced the functionality of our school.

TESTIMONIALS



Paula Mackenzie
PRINCIPAL, ST BRIGID'S PRIMARY SCHOOL

We were delighted to work with Nick McRae and Metrocon when extending our Year One classrooms. Nick ensured that the project ran on time and the finishes were excellent. They worked to a schedule and delivered everything that was asked of them on time. Metrocon worked tirelessly around the clock to make sure it was completed on time. With so many workmen on site it was incredible that the school functioned not realising they were there. They were quiet and respectful of the school and students. It was a wonderful experience and I would recommend Metrocon and Nick to anyone. Building can be a troublesome time but with Nick and his company it was a breeze. I cannot recommend them enough, they were true professionals.



Sally Matthews
DIRECTOR, MATTHEWS & SCAVALLI ARCHITECTS

Matthews & Scavalli Architects have successfully worked with Metrocon on two Catholic education projects. These were learning area upgrades at St Kieran Primary School in Tuart Hill and staff room replanning & upgrade at Notre Dame Primary School in Cloverdale.

St Kieran Primary school project was the refurbishment of existing learning areas replanning to allow better flow of students and more access to natural light and ventilation into internal spaces. The staff of Metrocon worked with the school to manage a tricky building process on a busy school site. The working relationship with Metrocon was regarded as helpful, Metrocon worked with the school to minimise the impact of their works on daily school life.

Notre Dame Primary school project was to add small learning areas to the library and expand the small staff room area and upgrade to this space allowing for a functional space for the staff to regroup and re-energise in during an eventful school day. Metrocon were careful in their management of a building project in the heart of a functioning school, the resultant quality of the outcome was well appreciated by the school community.



Mark de Kluyver
PRINCIPAL, HOLY ROSARY CPS

Holy Rosary School in doubleview engaged the services of Metrocon to undertake building works ... Both projects were time sensitive, needing to be completed around the daily running of the school, relocating students to alternative spaces—including the staff room. The projects were also budget sensitive. In each case, the initial conversations, and suggestions from Metrocon as to how to achieve even better outcomes were most valuable. The works were completed in a timely manner, on budget, and to our satisfaction. Metrocon demonstrated their ability to engineer cost neutral solutions to unexpected issues arising from working within old buildings and succeeded in bringing these buildings back to life. Our school looks good and attracts favourable comment from existing and prospective families.

It says a lot that we secured the services of Metrocon for a second project. We have faith in the quality of their work and their tradespeople. Working with a solution focused building company was of major importance. Furthermore, Metrocon's induction process for their staff working on our site was detailed and thorough, and we did not have any issues. We are keen to undertake a third project in the near future. We would be happy to work again with Metrocon. They have been exceptional.

TESTIMONIALS



Eamon Broderick
DIRECTOR, TRCB

TRCB worked with Metrocon on two consecutive building contracts to undertake extensive renovations and additions to the Heritage-listed “Mann Building” at Aranmore Catholic College. These projects required careful coordination of trades and attention to detail as well as the capacity to adapt to suit building conditions uncovered during construction. The project was undertaken on an occupied secondary school site with works timed to suit the school calendar. The team at Metrocon were very proactive in resolving issues and achieved a high quality of construction and finish for this project. We have no hesitation in recommending Metrocon for work of a similar nature.



Mark Langdon
DIRECTOR, DWA ARCHITECTS

DWA Architects have successfully completed 5 projects with Metrocon over a 10 year period and are currently completing a 6th project in November 2022. All projects have been completed on time and have demonstrated a high level of construction competency. Metrocon have been responsive to the client delivery requirements and maintain a focus on delivering quality outcomes. The Metrocon team have a high level of professionalism and construction experience which is supported by a proactive approach with a good level of communication and planning.

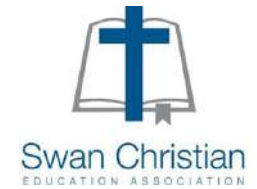
Metrocon have offered flexible procurement models to suit various projects from; traditional tendering, to negotiated contracts and also design and construct. All have been executed in a professional and co-operative manner. DWA Architects would have no hesitation in recommending Metrocon for future project delivery.

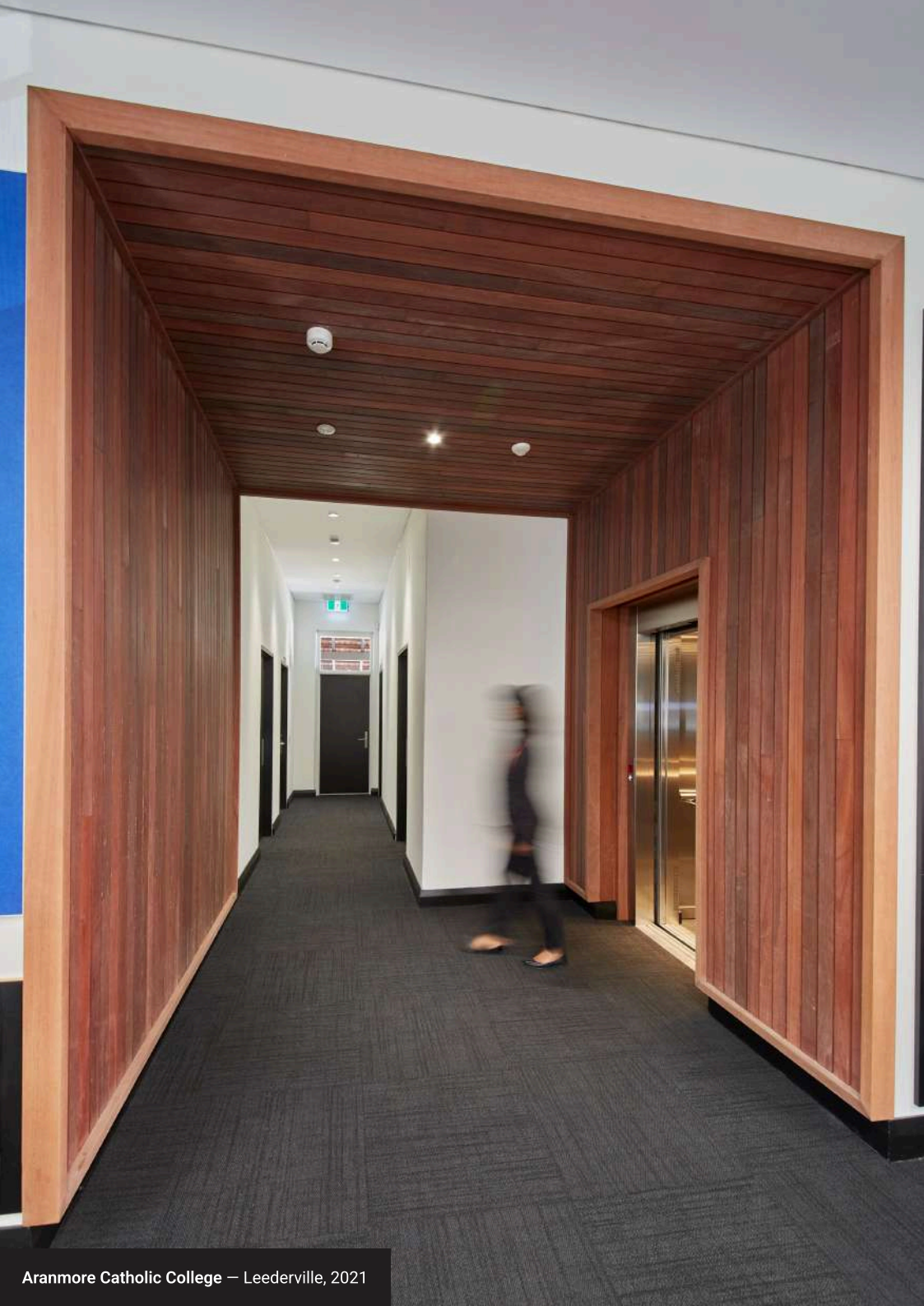


Suzie Richards
DEVELOPMENT CONSULTANT, CEWA

As a representative of CEWA I have worked with Metrocon on a number of building projects in recent years. I have found the Metrocon team to be friendly, helpful and hardworking, often putting in long hours and weekends to complete work to agreed timelines. The company is known for being solutions focused and cooperative to resolve issues which may arise during construction. I look forward to working with the team again.

OUR CLIENTS





COMPANY DETAILS

ADDRESS

1/28 Belmont Avenue
Rivervale WA 6103
Australia

PHONE

+61 8 9328 7371

EMAIL

admin@metrocon.com.au

WEBSITE

metrocon.com.au

ABN

12 108 142 034

BUILDER'S REGISTRATION NO.

11887



1/28 Belmont Ave, Rivervale WA 6103, Australia

+61 8 9328 7371

admin@metrocon.com.au

METROCON.COM.AU

© Metrocon 2026